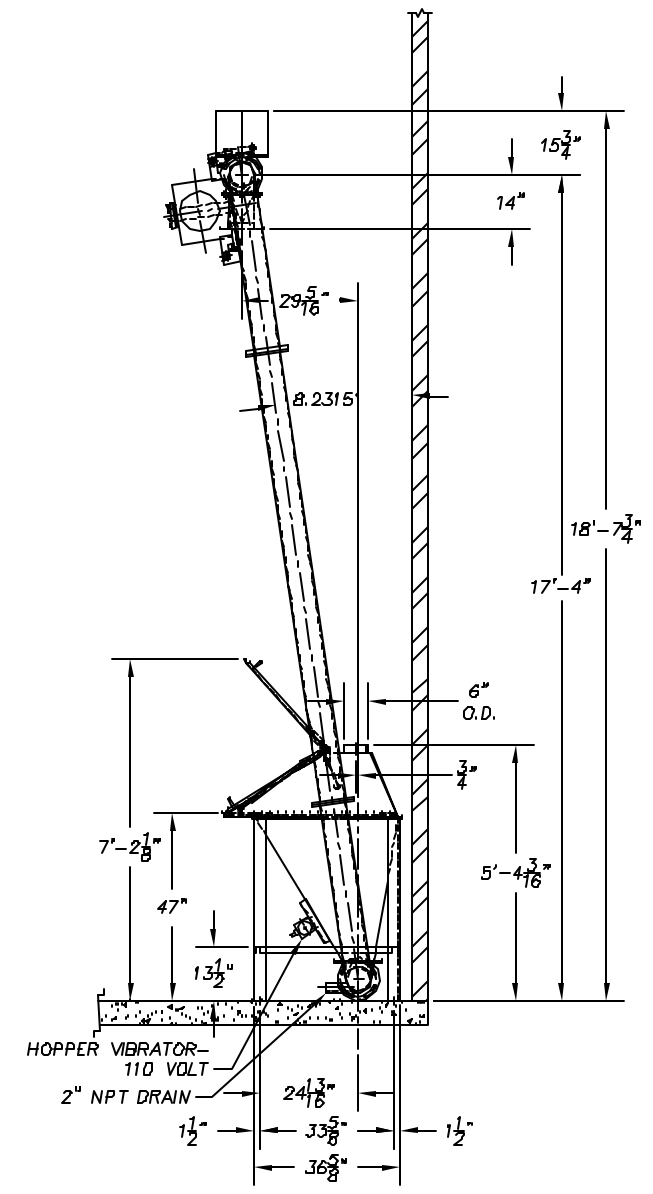


Change to 6'-1 5/16"

Change to 11'-10 7/8"



Carefully note vertical change 2° produces in this length. Make vertical tube lengths reflect this difference.

NOTES:

- | | |
|--|--|
| (1) CUSTOMER P.O.# 4500089371/4500089372 | (9) EXTERNAL C.S. SURFACES PAINTED STEEL-1T STANDARD SHOP SURFACE PREPARATION. DRIVE GUARDS TO BE SAFETY YELLOW. |
| (2) CONVEYORS REQUIRED- THREE TOTAL | (10) MOTORS 230V/460V/3PH/60 HZ/TEFC |
| (3) CONVEYOR SPEED- 50 FPM TO ACHIEVE 7.5 CFM | (11) DRIVE MOTOR- 7.5 HP/380V/1800RPM/TEFC |
| (4) MATERIAL CONVEYED- SALT, SOYBEAN LECITHIN, MONO-DIGLYCERIDES, TITANIUM DIOXIDE | (12) REFER TO SHEET 1 OF 2 FOR EQUIPMENT MATERIAL LIST. |
| (5) MATERIAL CHARACTERISTICS: FINE TO GRANULAR, 23 TO 33 LBS CU FT, DRY, FREE TO SLUGGISH FLOWING, MILDLY ABRASIVE | |
| (6) MATERIAL CONTACT SURFACE- #304 S.S. | |
| (7) CONVEYOR SUPPORT AND INSTALLATION LABOR FURNISHED BY OTHERS. | |
| (8) FLANGE CONNECTIONS STAMPED WITH NUMBERS. | |

APPROVAL REQUESTED

APPROVED AS IS

APPROVED WITH CHANGES INDICATED

CHANGE AND RESUBMIT

CHANGE AND RESUBMIT, DO NOT PROCEED WITH FABRICATION

SIGNATURE: _____

COMPANY: _____

DATE: _____

<small>UNLESS OTHERWISE SPECIFIED DIMENSIONS ARE ENGLISH (FEET AND/OR INCHES)</small> <small>TOLERANCES</small> <small>DECIMALS INCHES FEET ANGLE</small> <small>X ±.020 1" - X" ±.1/16" UP TO 20 FEET</small> <small>XXX ±.015 1" - X" ±.1/32" OVER 20 FEET ±1"</small> <small>XXX ±.035 1" - X" ±.1/8" OVER 20 FEET ±1"</small> <small>DO NOT SCALE DWG. BREAK ALL SHARP EDGES</small>		DATE 11/20/03	JOB NO. H09719-A0, B0	DRAWN EAS
		SCALE 1/2" = 1'-0"	BOM = 1	DWG = 1
HAPMAN Hapman Conveyors <small>P.O. BOX 2321 18028 E. KILGORE ROAD, KALAMAZOO, MICHIGAN 49003 PHONE (814) 343-1875 FAX (814) 343-2477</small>		6 IN TUBE CONVEYOR LAYOUT S.S. CONSTRUCTION CUST. DEGUSSA SHEET 2 OF 2 DWG. NO. H09719A0-D00		